

MAGMOUNT X



APPLICATIONS

This MagMount X is a heavy duty magnetic mount that is designed to be used with antennas normally used on vehicles but where permanent mount is impractical or impossible.

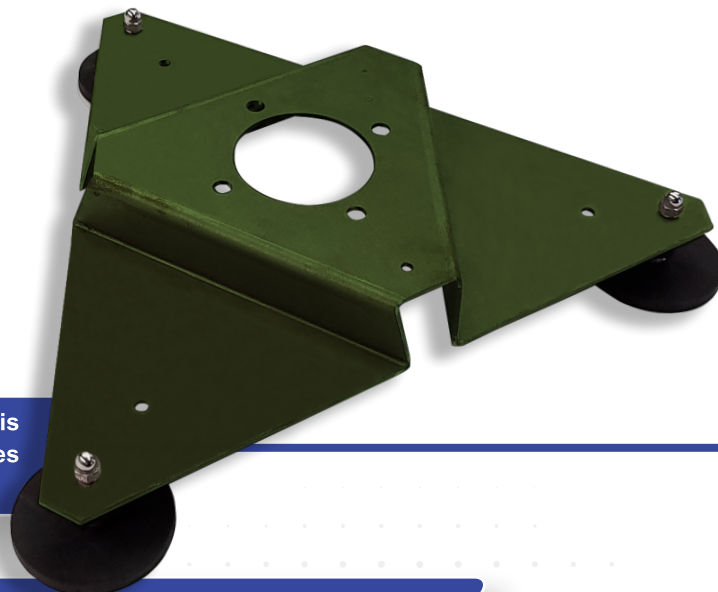
FEATURES

MagMount X is a heavy duty magnetic mount that is ideally suited for applications where a permanent installation of the antenna on a vehicle is not possible. This solid, painted steel construction is specifically designed for temporary installations and can be used on a variety of magnetic surfaces. The magnets articulate to allow for adhesion to un-level/slightly curved surfaces and are covered with a rubber material to reduce the chance of damaging the vehicle surface.

HEAVY DUTY MAGNETIC MOUNT

TEMPORARY INSTALLATIONS

**FAST AND EASY ATTACHMENT TO
MAGNETIC FRIENDLY SURFACES**



PRODUCT SPECIFICATIONS

SPECS

COLOR
MATERIAL
MAGNETS
SURFACE PROTECTION
MAGNETIC GRIP FORCE
MAXIMUM WIDTH
WEIGHT
MOUNTING WEIGHT
ANTENNA MOUNT

PERFORMANCE

Olive Green, Black or Custom
Painted Steel, 12 ga. / .105" (2.67mm)
3 x 3.46" (88mm)
Rubber
3 X 411N
18.38" (467 mm)
~ 7 lbs (3.175 kg)
3.2" (81.28mm)
4 Holes (.41") on 4.5" bolt circle

SAFETY ADVICE:

The magnetically mounted antenna system may lift off from the vehicle in case of collision or emergency braking. Always secure the mounting with a wire strap to a secure point on the vehicle. For maximum grip carefully clean the selected surface area and the magnets prior to attaching the MagMount X.