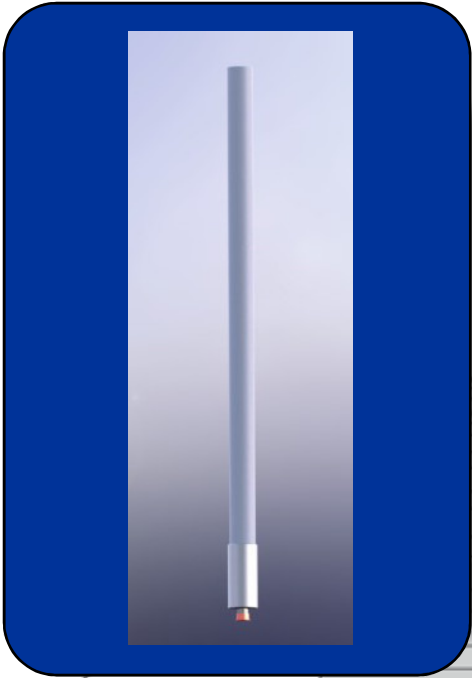


1750-1850 MHz L-BAND ANTENNA

- Upright and null-fill for improved ground-to-air coverage
- Rugged, Fiberglass radome

Ground-To-Air



Model : DPV-108A

Part Number: 1500-0582-201

The DPV-108A L-Band antenna was designed for ground-to-air, line of sight voice or data communication circuits. The antenna is vertically polarized and has a frequency range of 1750–1850 MHz with a 200 watt average power capacity. The antenna was specifically designed to optimize maximum radiated power above the horizon by including up-tilt and null fill. Null fill above the horizon ensures the radiated power remains virtually constant allowing for uninterrupted communication between the base station and the aircraft, while the antenna's 10 dBi gain accommodates long range communication circuits of over 100 miles. The antenna is supplied with a 7-16 DIN connector. The rugged fiberglass radome and thick walled aluminum mounting base ensure the DPV-108A will provide many years of excellent service in extreme environmental conditions including wind and ice.

ELECTRICAL SPECIFICATIONS

SPECS	PERFORMANCE
Frequency Range	1750-1850 MHz
VSWR	1.5:1 Max (50 Ω)
Gain	10 dBi
Polarization	Vertical
Vertical -3dB Beamwidth	7° +/- 1°
Horizontal -3dB Beamwidth	360°
Azimuth Ripple	+/- 0.5 dB
Power Input	200 Watts
Electrical Upright	~1°

MECHANICAL & ENVIRONMENTAL SPECIFICATIONS

SPECS	PERFORMANCE
Connector	7-16 DIN Female
Mounting	Side mount; clamps provided
Radome	Fiberglass
Radome Diameter	2.375 inches (60.33 mm) O.D.
Color	White Standard (Color Options Available)
Length	52.23" (1327.15mm)
Weight	5 lbs (1.81 kg)
Wind Survival	120 MPH (193.12 km) with 1" radial ice
Lightning Protection	Direct Ground



101 S. E. 25th Avenue
Mineral Wells, TX 76067

800.553.1507 (USA ONLY)

p: 940.325.3301

f: 940.325.0716

e:sales@antennaproducts.com

www.antennaproducts.com

Pursuant to APC's policy of continuous product improvement, specifications are subject to change without notice or obligation.

Communication Solutions For A Wireless World

1750-1850 MHz L-BAND ANTENNA

- Uptilt and null-fill for improved ground-to-air coverage
- Rugged, fiberglass radome

Ground-To-Air



Model DPV-108A

Part Number: 1500-0582-201

Elevation Patterns

