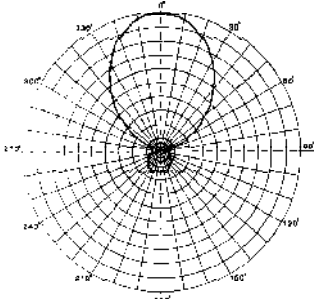
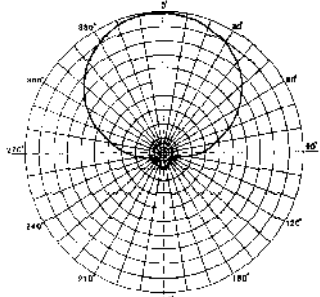


YG-50/118

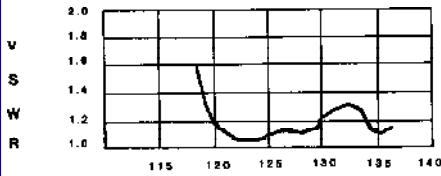
- BROADBAND
- HIGH GAIN
- VERTICALLY POLARIZED



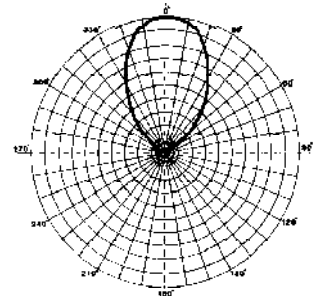
TYPICAL ELEVATION PATTERN— YG-60



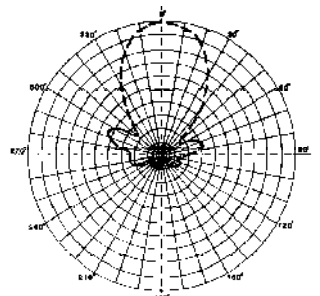
TYPICAL AZIMUTH PATTERN— YG-50



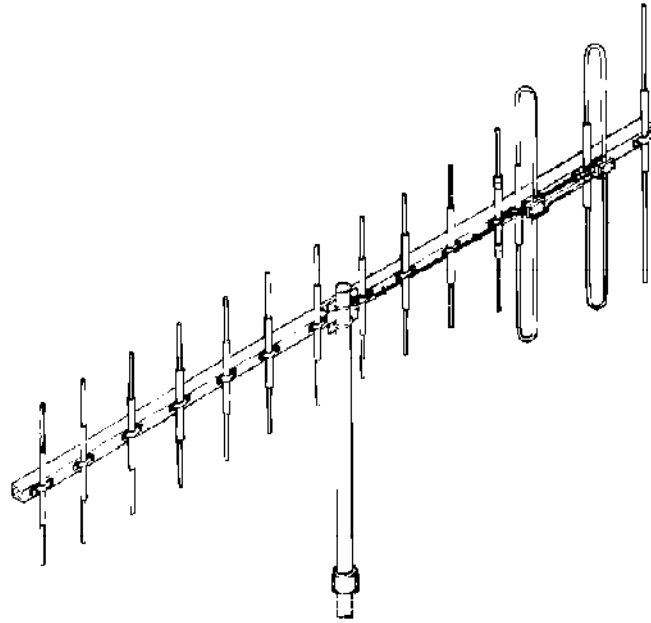
FREQUENCY IN MHz



TYPICAL ELEVATION PATTERN— YG-118



TYPICAL AZIMUTH PATTERN— YG-118



Applications

The Yagi antennas are broadband devices designed for use on ground-to-air communication circuits.

Features

The Yagi antennas are vertically polarized and are primarily used on longer VHF circuits providing 6 and 10 dBi gain.

Characteristics

The antennas are composed of linear radiating elements which attach to a rectangular support boom. Each configuration has two driven

elements and a single reflector. The YG-50 has three directors, and the YG-118 has eleven directors. Both antennas have a 20 dB front-to-back ratio.

Optional Equipment

Bay harness for multiple feed of antennas



SPECIFICATIONS

Electrical

Frequency Range 118-136 MHz
 Polarization Vertical
 Elevation Beamwidth 67° Typical
 Azimuth Beamwidth 105° Typical
 Elevation Pattern Peak Horizon +10°
 Front to Back Ratio 14 dB minimum
 VSWR 2:1 maximum
 RF Power Gain 6 dBi minimum
 Terminal Impedance 50 Ohms unbalanced
 RF Power Rating 50 Watts
 DC Resistance to Gnd Less than 1 Ohm
 Connector* Type "N" Female

YG-50

Frequency Range 118-136 MHz
 Polarization Vertical
 Elevation Beamwidth 50° Typical
 Azimuth Beamwidth 65° Typical
 Elevation Pattern Peak Horizon +10°
 Front to Back Ratio 20 dB minimum
 VSWR 2:1 maximum
 RF Power Gain 10 dBi minimum
 Terminal Impedance 50 Ohms unbalanced
 RF Power Rating 50 Watts
 DC Resistance to Gnd Less than 1 Ohm
 Connector* Type "N" Female

YG-118

*UG-1185 Mating Connector provided.

Mechanical

Length 72"
 Weight 17.5 Lbs.
 Mount 2-1/2" IPS pipe
 Temperature -50°C to + 70°C
 Humidity 0-100%
 Wind and Ice 85 knots with 1/2" radial ice
 Rain Up to 7" per hour
 Service Life 10 yrs.

Length 147"
 Weight 35 Lbs.
 Mount 2-1/2" IPS pipe
 Temperature -50°C to +70°C
 Humidity 0-100%
 Wind and Ice 85 knots with 1/2" radial ice
 Rain Up to 7" per hour
 Service Life 10 yrs.