

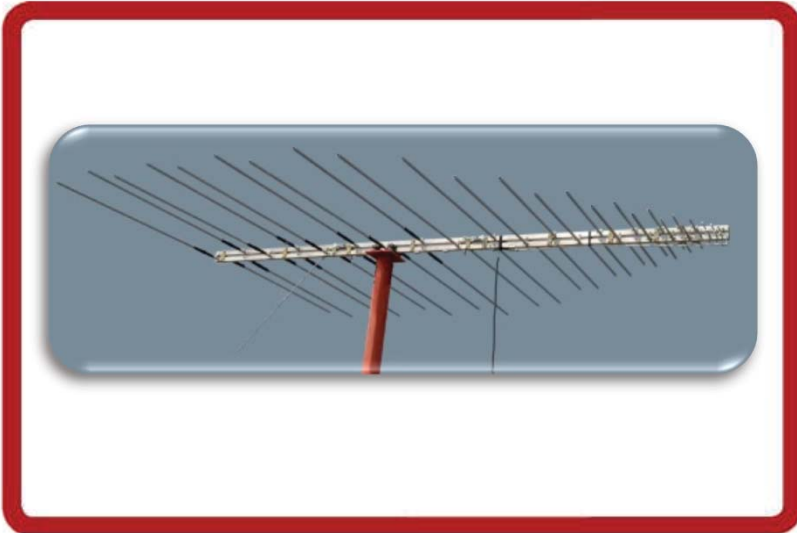
Transportable

20-1000 MHz LOG PERIODIC ANTENNA

- Transportable
- Broadband
- Vertical or Horizontal Polarization

Model : TLP-20

Part Number: 1000-2242-201



The TLP-20 is a tactical log periodic antenna that covers the 20-1000 MHz frequency range and is designed for transmit and receive purposes. The antenna uses a 3 piece boom for quick assembly and disassembly in the field, with minimal or no tools and can be used in the vertical or horizontal mode. The antennas removable elements clamp onto an element adapter for quick installation; each element and element position is numbered to insure it is installed in its proper position.

The TLP-20 is constructed of high quality aluminum with all stainless steel hardware resulting in a lightweight and high strength antenna ideally suited for fixed or tactical systems.

ELECTRICAL SPECIFICATIONS

SPECS	PERFORMANCE
Frequency Range	20-1000 MHz
VSWR	2.0:1 (typical) (50 Ω)
Gain	4-8 dBi
Polarization	Linear
Vertical -3dB Beamwidth	40° - 90°
Horizontal -3dB Beamwidth	70° - 140°
Power Input	200 Watts



101 S. E. 25th Avenue
Mineral Wells, TX 76067

800.553.1507 (USA ONLY)

p: 940.325.3301

f: 940.325.0716

e:sales@antennaproducts.com

www.antennaproducts.com

Pursuant to APC's policy of continuous product improvement, specifications are subject to change without notice or obligation.

MECHANICAL & ENVIRONMENTAL SPECIFICATIONS

SPECS	PERFORMANCE
Connector	"N" Female
Mounting	Vertical or Horizontal
Color	Black
Boom Length	200" (5080mm)
Shortest Element Length	1.73" (43.94 mm)
Longest Element Length	77.25" (1962.15 mm)
Weight	70 lbs. (31.75 kg)
Temperature	-40°C to +80°C
Wind Survival	120 MPH (193.12 km)
Lightning Protection	Direct Ground

20-1000 MHz LOG PERIODIC ANTENNA

- Transportable
- Broadband
- Vertical or Horizontal Polarization

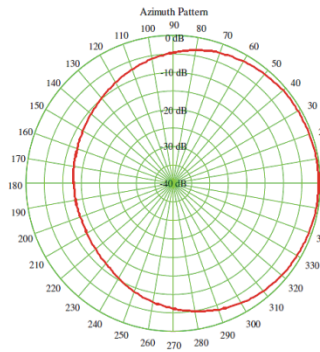
Tactical



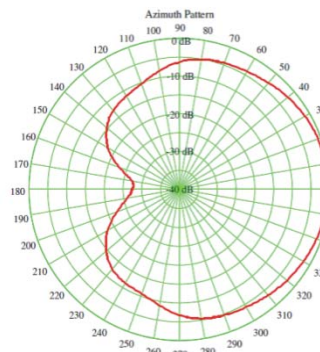
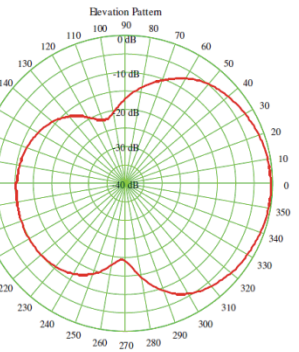
Model TLP-20

Part Number: 1000-2242-201

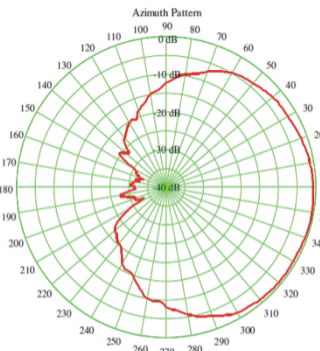
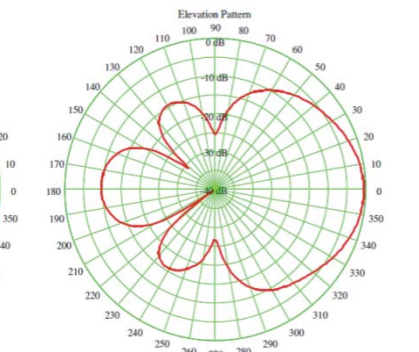
Elevation Patterns



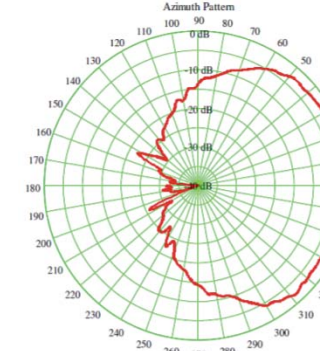
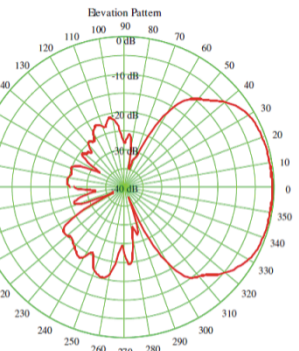
30 MHz



90 MHz



400 MHz



900 MHz