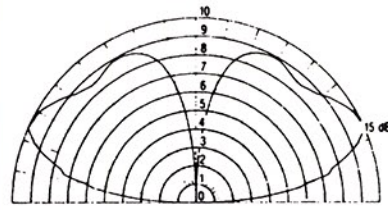
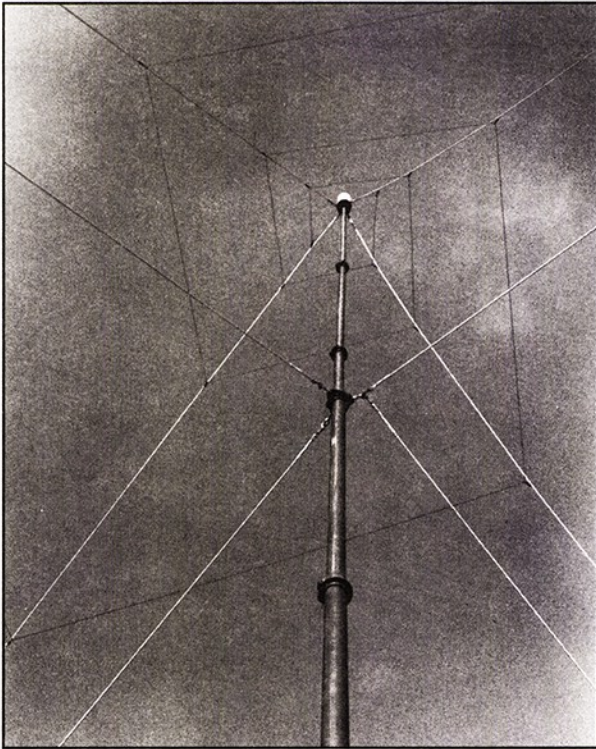
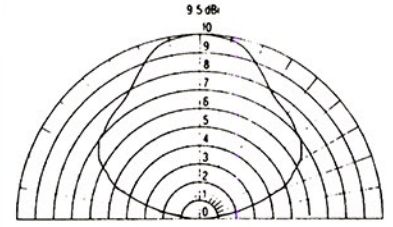


# ST-230

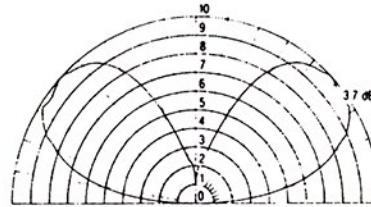
- VERTICAL POLARIZATION
- HORIZONTAL POLARIZATION
- TRANSPORTABLE



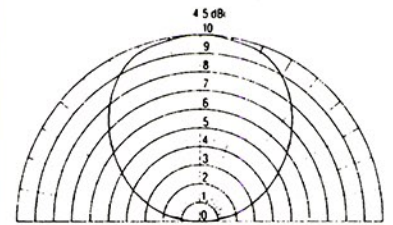
ELEVATION PATTERN F 2 MHz ST-230 SPIRAL ANTENNA  
CONDUCTIVITY 1E-03 DIELECTRIC CONSTANT 5 EVEN MODE



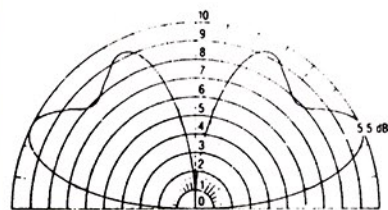
ELEVATION PATTERN F 2 MHz ST-230 SPIRAL ANTENNA  
CONDUCTIVITY 1E-03 DIELECTRIC CONSTANT 5 ODD MODE



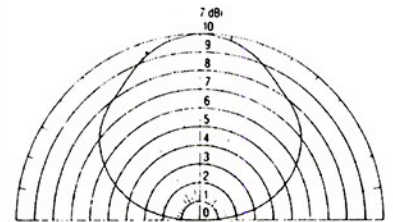
ELEVATION PATTERN F 15 MHz ST-230 SPIRAL ANTENNA  
CONDUCTIVITY 1E-03 DIELECTRIC CONSTANT 5 EVEN MODE



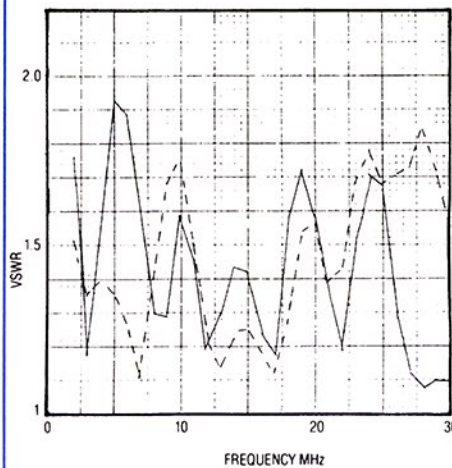
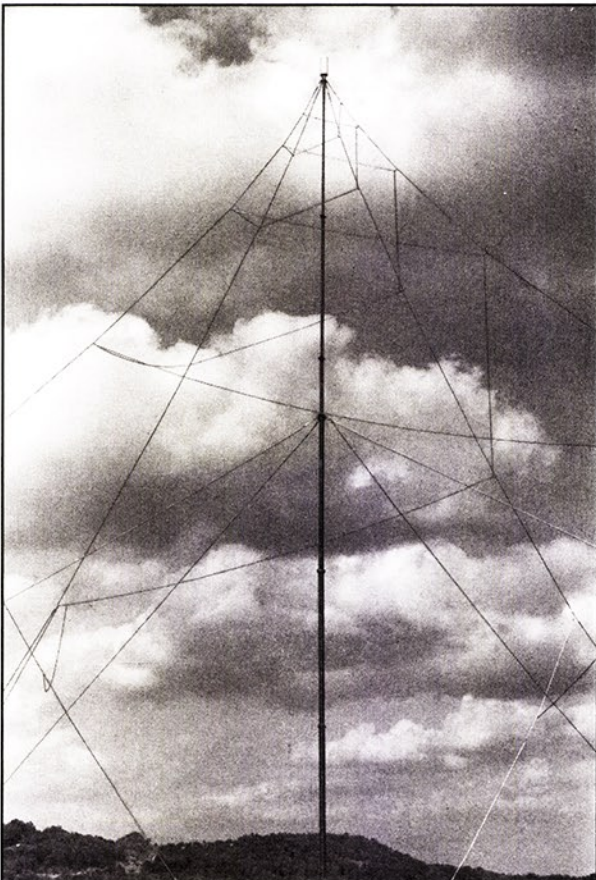
ELEVATION PATTERN F 9 MHz ST-230 SPIRAL ANTENNA  
CONDUCTIVITY 1E-03 DIELECTRIC CONSTANT 5 ODD MODE



ELEVATION PATTERN F 27 MHz ST-230 SPIRAL ANTENNA  
CONDUCTIVITY 1E-03 DIELECTRIC CONSTANT 5 EVEN MODE



ELEVATION PATTERN F 19 MHz ST-230 SPIRAL ANTENNA  
CONDUCTIVITY 1E-03 DIELECTRIC CONSTANT 5 ODD MODE

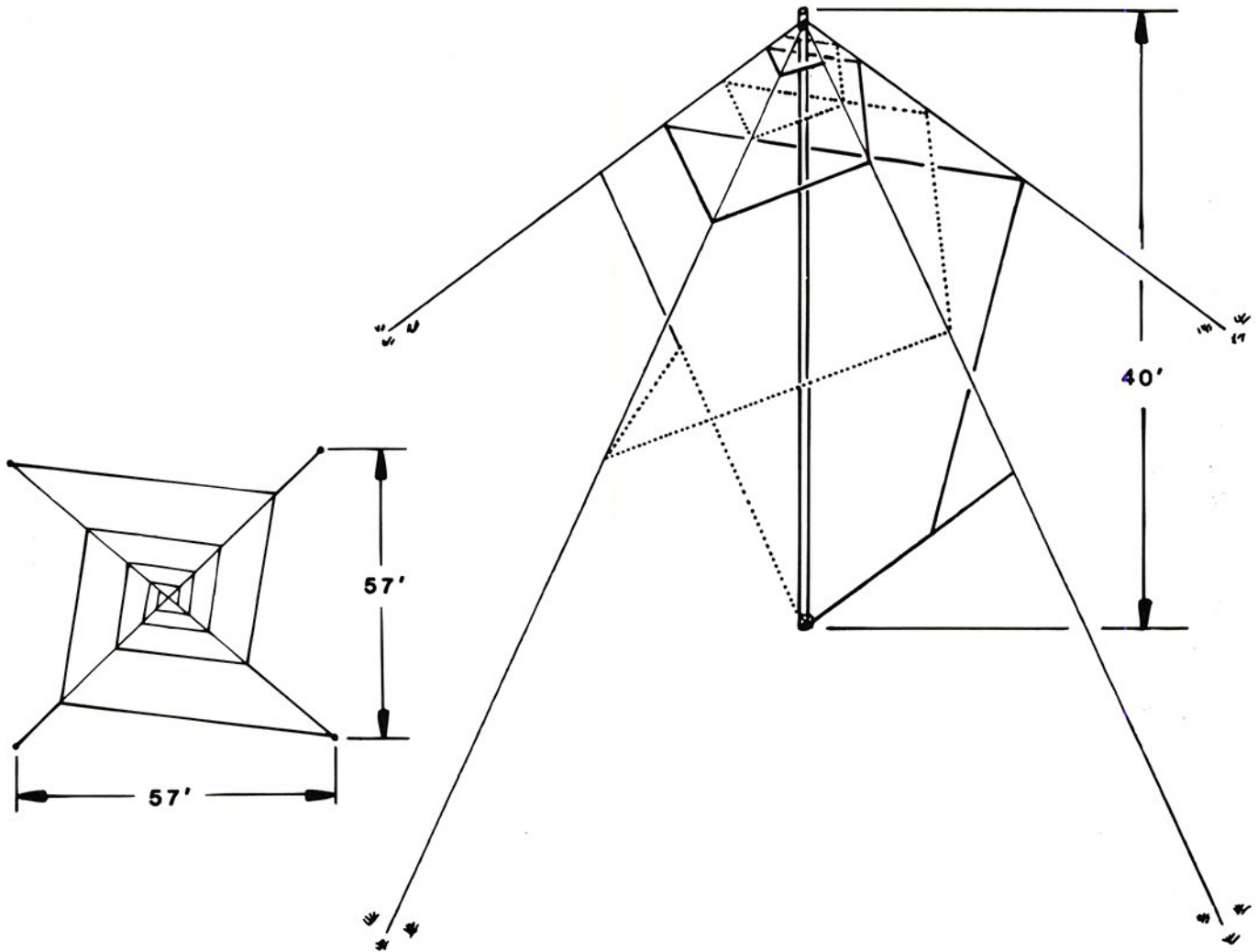


--- HORIZONTAL POLARIZATION MODE  
— VERTICAL POLARIZATION MODE  
VSWR OF ST-230 ANTENNA



# ST-230

- VERTICAL POLARIZATION
- HORIZONTAL POLARIZATION
- TRANSPORTABLE



## SPECIFICATIONS

Frequency Range		
Even Mode	2 to 30 MHz	
Odd Mode	2 to 30 MHz	
Polarization		
Even Mode	Predominately Vertical	
Odd Mode	Predominately Horizontal	
Impedance	50 Ohms unbalanced	
VSWR	2:1 maximum	
Power	500 Watt avg/PEP	
Gain		
Even Mode	2 MHz	-16 dBi
	30 MHz	-6 dBi
Odd Mode	2 MHz	-12 dBi
	20 MHz	-2 dBi
Input Connector	Type "N" female	
Wind Loading	67 mph	
Weight (lbs)	200	
Erection Time	2 men, 30 minutes	
Dimensions Erected		
Height (H)	40 ft	
Base (B)	57 ft x 57 ft square	
Dimensions Stored	72 in x 19 in x 20 in	

## Applications

The ST-230 is a transportable antenna that can be quickly erected and is suited for both horizontal and vertical polarization for short-range communications. The antenna has two modes of operation. The antenna modes may be used either independently or simultaneously.

## Features

Designed for rapid deployment and utilizing a lightweight, telescoping mast it is possible for two men to erect the antenna in 30 minutes. The ST-230 spiral design utilizes the 40-foot height mast to support the pyramidal antenna configuration.

## Characteristics

The even mode provides predominately vertical polarization at elevation angles satisfactory for medium- or long-range communications using the skywave and for very short ranges using surface-wave propagation. The odd mode of operation utilizes predominately horizontal polarization at high angles of incidence for short-range communications. The antenna is fed by a hybrid which has two 50-Ohm input terminals. The mode of operation depends on which input is used. Both modes may be used simultaneously. Eight 40-foot radial wires form a ground system and locate anchors.

## Equipment Supplied

Telescopic mast, element wires, hybrid, terminations, accessory kit, and canvas carrying bag.

## Optional Equipment

Transit case