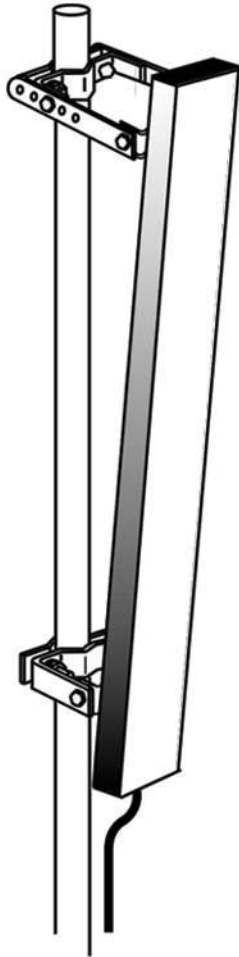


# ISM50-2400-18-T0-N

Rugged ISM 50 Degree Panel Antenna 2400-2500 MHz



## PRODUCT DESCRIPTION

Model Number: ISM50-2400-18-T0-N  
Part Number: 1009-0428-401

## ELECTRICAL SPECIFICATIONS

Frequency Range: 2400-2500 MHz  
Gain: 18 dBi (+- 0.5 dBi)  
Nominal Impedence: 50  $\Omega$   
Maximum Power Input: 250 Watts continuous  
Polarization: Vertical  
Beamwidth - Vertical: 9° (+- 0.5 degree)  
Beamwidth - Horizontal: 50° (+- 3 degrees)

## MECHANICAL SPECIFICATIONS

Connector: Type "N" Female  
Mounting: 0-5°, Adjustable Mounting,  
Fits 1.5"-2.75" OD Pipe  
Dimensions: 32.1" x 5.1" x 2.2"  
Flat Plate Eq.: 2.22 sq. ft. frontal, 0.60 sq. ft. side  
Wind Load @ 100 MPH: 89 lbs. frontal, 24 lbs. side  
Weight: 15 lbs.

## ENVIRONMENTAL SPECIFICATIONS

Wind Survival: 150 MPH  
Lightning Protection: Direct Ground

