



ANTENNA PRODUCTS

500-2500 MHz Bi-Conical Antenna

- Rugged design
- Instantaneous bandwidth of 500-2500 MHz

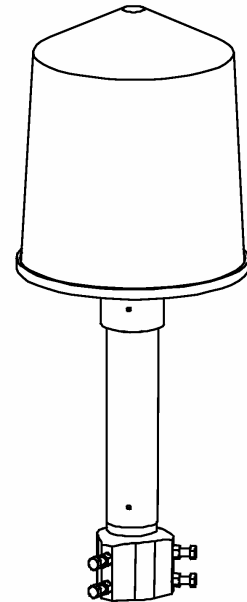
Model BCV-500

ELECTRICAL SPECIFICATIONS

Frequency Range	500-2500 MHz
VSWR	2.0:1 VSWR Max
Forward Gain	4 dBi max, 1 dBi min.
Polarization	Vertical
Maximum Power Input	200 Watts
Input Impedance	50 ohms
Vertical -3dB Beamwidth	70° +/- 30°
Horizontal -3dB Beamwidth	360°
Azimuth Ripple	+/- .5 dB

MECHANICAL & ENVIRONMENTAL SPECIFICATIONS

Connector	Type 'N' Female (1 each)
Mounting	Fits over 2.5 IPS pipe or 1.25" pipe with adapter (p
Dimension and Weight	12 inches x 12 inches O.D. / < 10 lbs.
Color	Gray Standard (Color Options Available)
Wind Survival	120 mph.
Lightning Protection	Direct Ground



The model BCV-500 is a wideband bi-conical antenna with an instantaneous frequency bandwidth of 500-2500 MHz. This rugged antenna is incased in a fiberglass radome to protect the antenna elements from the harmful environment. The antenna mounts over a 2.5" or 1.25" IPS pipe with adapter (provided).