

AWS360DP-1710-10-T0-D-A3

Single Band (1710-2170 MHz)
MIMO Dual Input Quasi-Omni

PIM Rated

MIMO

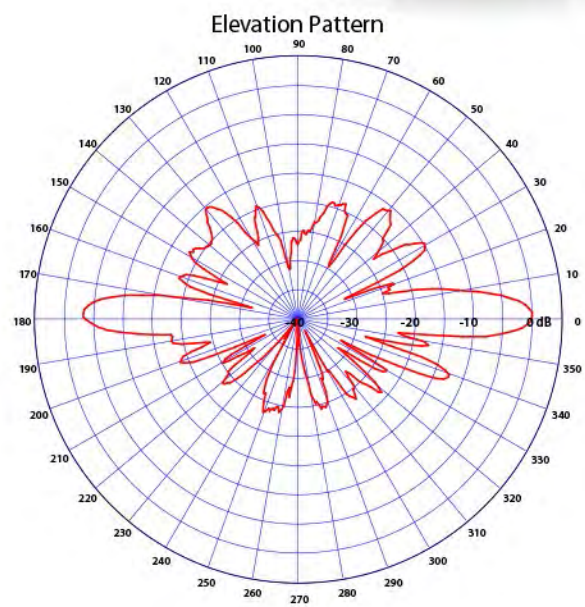
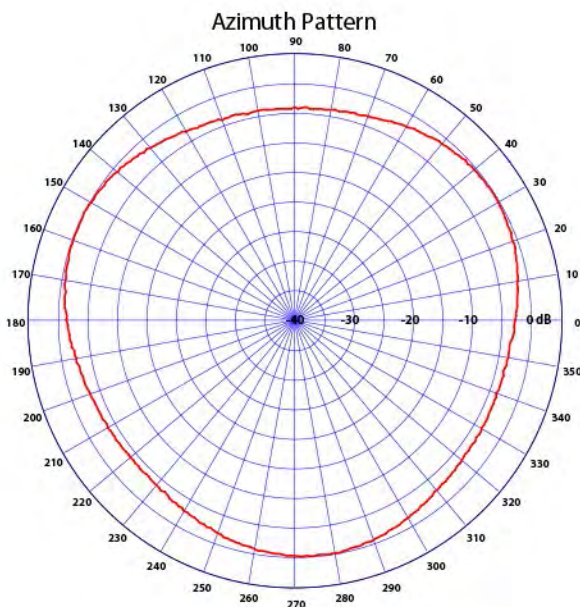
Frequency coverage for entire AWS/PCS band

Electrical Specs

Frequency Range	1710-2170 MHz
VSWR	1.7:1 VSWR Max
Forward Gain	2 x 9 dBi
Polarization	Vertical
Max Power Input	200 Watts
Input Impedance	50 ohms
Vertical -3dB Beamwidth	10° +/- 1° (nominal)
Horizontal -3dB Beamwidth	360° +/- 5°
Azimuth Ripple	+/- .5 dB
Electrical Downtilt Options	2° and 4° (T2 and T4 part number)
Passive Intermod (PIM)	-150 dBc

Mechanical & Environmental Specs

Connector Type	DIN 7/16 (Two connectors)
Dimensions	45 1/2" x 8.0" O.D. / < 12.2 lbs. (5.55 kg)
Color	Brown Standard (Color options available)
Wind Survival	120 mph
Lightning Protection	Direct Ground



Antennaproducts.com
101 SE 25th Ave., Mineral Wells, TX 76067
phone 940-325-3301 fax 940-325-0716