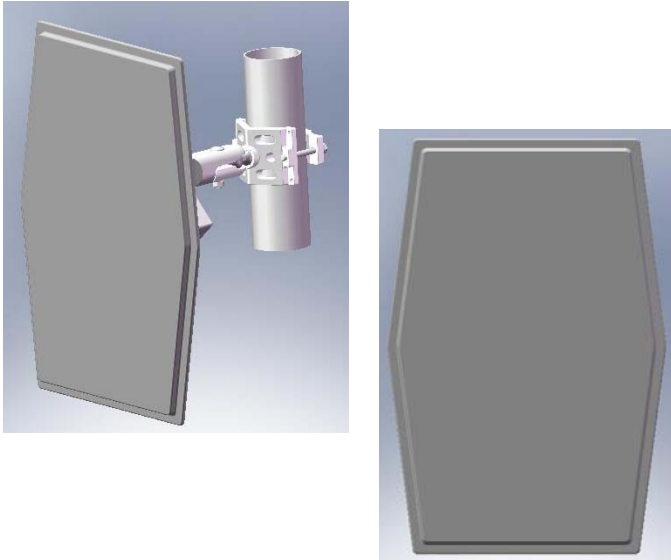


2.3-2.5GHz 16dBi Dual Polarization Panel Antenna for ARC IES™, Integrated Enclosure Solution



- ◆ Fits ARC's IES, Integrated Enclosure Solution
- ◆ Enclosure & Bracket SOLD SEPARATELY (When ordering, please specify L Bracket only)
- ◆ US Engineered
- ◆ Manufactured under strict US quality control procedures
- ◆ High gain, competitive pricing, patented circuit design
- ◆ Low profile and rugged design for outdoor use
- ◆ Custom Enclosures available

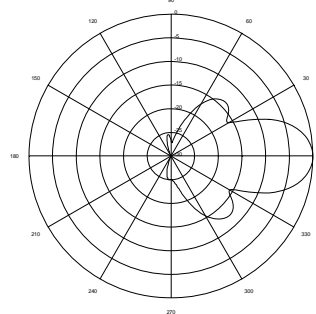
Mechanical and Environmental Specifications	
Length x Width x Depth	19.4in x 13.0in x 0.58in (492.8mm x 331.2mm x 14.7mm)
Weight	2.6lb (1.2kg)
Backplane	Aluminum
Radome	UV stabilized ABS plastic, gray
Wind Survivability	125mph (201kph)
Wind Load	1.59ft ² (0.148m ²)
Operating Temperature Range	-49°F to +149°F (-45°C to +65°C)
Pole Mount Diameter Range	0.75in to 3.0in (19mm to 76mm)

Ordering Information	
<u>Part #</u>	<u>Description</u>
ARC-ID2416B01	2.4GHz 16dBi Dual Pol, 2 R/A SMA Jacks

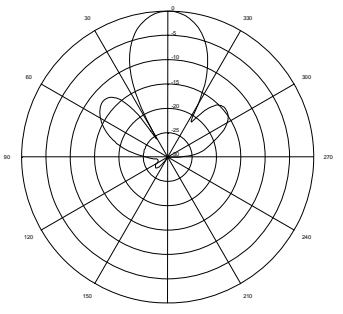
Shipping Information	
<u>Sizes and Weights</u>	<u>Description</u>
TBD	Bulk Pack, includes 10 single packs in an overpack box

Electrical Specifications	
Frequency Range	2.3-2.5GHz
Gain	16.1 dBi typical
3dB Beamwidth Vertical/Horizontal	25 degrees/27 degrees
Polarization	Dual Linear, Vertical and Horizontal
VSWR	≤1.5:1 typ., ≤1.7:1 max.
Port to Port Isolation	40dB (minimum)
Front-to-Back Ratio	≤30 dB
Cross Polarization	≤20 dB
Power Rating	6 watts
Impedance	50 ohms
Lightning Protection	DC ground
Connector Type	2 R/A SMA Jacks

RF Patterns
Vertical Cut, typ.



RF Patterns
Horizontal Cut, typ.



www.antennas.com